



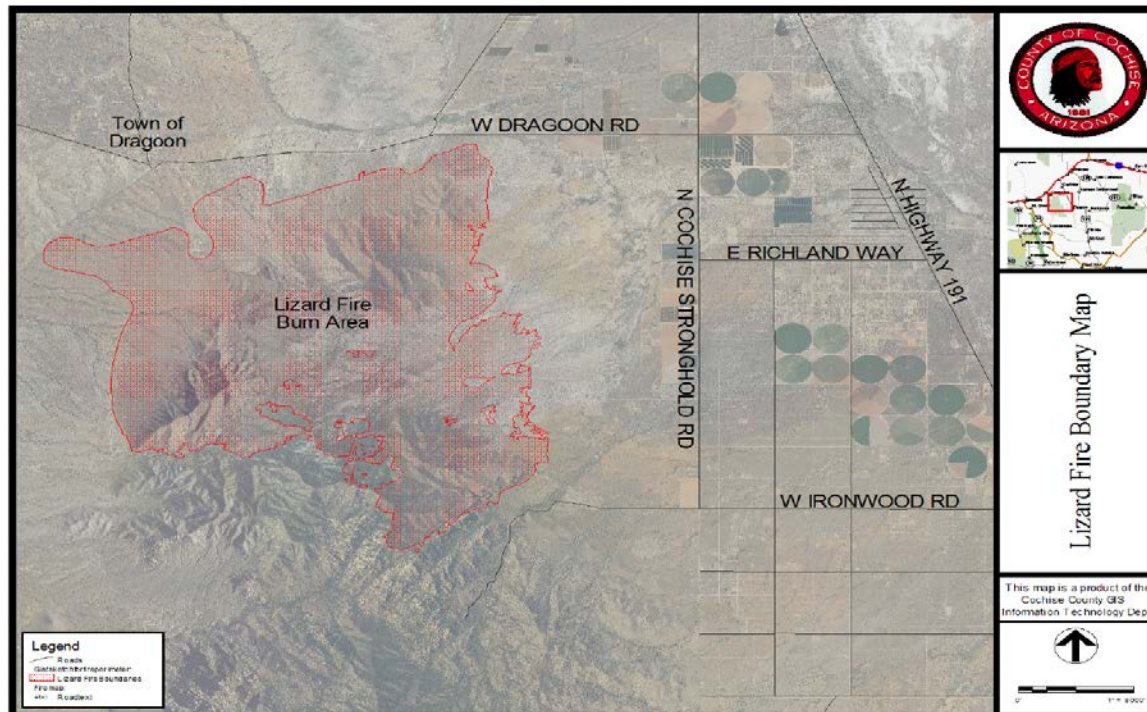
# Cochise County Community Development Highway and Floodplain Division

Public Programs...Personal Service  
[www.cochise.az.gov](http://www.cochise.az.gov)

## Post Fire Flooding Danger

- Risk of flooding after a fire increases dramatically
  - Soot, & debris clog channels
  - Rapid water & debris run-off of burned areas
  - RESULT IN HIGHER FLOODS, DEBRIS FLOWS, & FLOODING IN NORMALLY DRY AREAS
- Flood Insurance is available for properties even in low-risk flood areas (zone X)
  - If you live near the Lizard Fire vicinity please contact one of the following for more information on purchasing flood insurance:
    - Federal Emergency Management Agency (FEMA) – [www.fema.gov](http://www.fema.gov) or (800) 611-6122
    - Or Local Insurance Agent(s)
  - For general flood questions contact:
    - Cochise County Floodplain – [www.cochise.az.gov](http://www.cochise.az.gov) or (800) 752-3745

\*\*\*\* The danger isn't over when the flames are out! \*\*\*\*



**Highway and Floodplain**  
1415 Melody Lane, Building F  
Bisbee, Arizona 85603  
520-432-9300  
520-432-9337 fax  
1-800-752-3745  
[highway@cochise.az.gov](mailto:highway@cochise.az.gov)  
[floodplain@cochise.az.gov](mailto:floodplain@cochise.az.gov)

**Planning, Zoning and Building Safety**  
1415 Melody Lane, Building E  
Bisbee, Arizona 85603  
520-432-9300  
520-432-9278 fax  
1-877-777-7958  
[planningandzoning@cochise.az.gov](mailto:planningandzoning@cochise.az.gov)